

ADDENDUM NO. 2

DATE OF ISSUANCE: May 13, 2025

PROJECT: 2025 FEMA Safe Room Addition
Crawford County High & Middle School
1130 S. State Road 66
Marengo, IN 47140

OWNER: Crawford County Community Schools

ARCHITECT'S PROJECT NO.: 22-131.000

ORIGINAL BID ISSUE DATE: April 14, 2025

SCOPE OF WORK

This Addendum includes changes to, or clarifications of, the original Bidding Documents and any previously issued addenda, and shall be included in the Bid. All of these Addendum items form a part of the Contract Documents. The Bidder shall acknowledge receipt of this Addendum in the appropriate space provided on the Bid Form. Failure to do so may result in disqualification of the Bid.

DOCUMENTS INCLUDED IN THIS ADDENDUM

This Addendum includes **17** pages of text and the following documents:

- Specification Sections: (number of pages included above)
07 1416 - Existing Brick Masonry Waterproofer, **10 1300.01** – Exterior Signs,
11 6600.01 – Divider Curtain
- Drawings: **AD2-01**

GENERAL INFORMATION

1. The Davis-Bacon Wage Scale covering Crawford County, IN does not include wage determinations for many trades. The necessary wage determinations will be requested from the U.S. Department of Labor, but the actual wage determinations will not be received prior to the project's bid date. It is recommended by the grant administrator to use a different Davis-Bacon wage scale from other Indiana counties that includes the missing trades wage determinations as a guide. These wage determinations shall be reviewed with the contract awarded general contractor when they become available. The guide wage determinations for bidding purposes may vary from the actual required wage determinations. The guide wage determinations **ARE FOR BIDDING PURPOSES ONLY**. The following web address provides the guideline for bidding trades not currently included in the Crawford County, IN Davis-Bacon Wage Schedule: <https://sam.gov/wage-determination/IN202500002/8>

2. Primavera & Associates is the project's peer reviewer as required by FEMA. The peer reviewer verifies the drawings, specifications, building construction, and test reports meet FEMA requirements. The contractor is required to provide all the testing in Section 01 4500 – Quality Control, but Primavera & Associates are hired directly by the Owner.

CHANGES TO SPECIFICATIONS

ADD-2 Item No. S-1 - 00 4201 – Proposal Form_ Part 1 (Form 96, Revised 2013)

Replace Page 2 with the attached Page 2 (changes Alternate #5 from Multi-Purpose Room Projection Screen to Multi-Purpose Room AV1 System).

ADD-2 Item No. S-2 - 01 2300 – Alternates

Replace Alternate No. 5 in its entirety with the following:

Alternate No. 5: MULTI-PURPOSE ROOM AV1 SYSTEM

1. Give the amount to be ADDED to the Base Bid for the following:
 - a. Provide and install AV1 system complete in Multi-Purpose Room D101. See Technology Drawings and Division 27 – Communications specifications.
2. Base Bid to include:
 - a. Rough-in only of AV1 system. See Technology Drawings and Division 27 – Communications specifications.

ADD-2 Item No. S-3 - 07 1416 – Existing Brick Masonry Waterproofer

Add Specification Section 07 1416 – Existing Brick Masonry Waterproofer in its entirety.

ADD-2 Item No. S-4 - 08 1416 – Flush Wood Doors

2.01 A: Remove “10. VT Industries” from the list of acceptable manufacturers.

ADD-2 Item No. S-5 - 08 1113 – Steel Doors and Frames

2.01 A: Add “12. De La Fontaine” to the list of acceptable manufacturers.

ADD-2 Item No. S-6 - 08 7100 – Finish Hardware

2.08 Hardware Set #6: Replace door “D115” with “D115B”.

2.08 Add Hardware Set #10: Interior Doors, Fire Rated, Pair (D115B) – Hinges, Cylinder, Lockset (active leaf) storage function, Automatic Flush Bolts (top and bottom, inactive leaf: Ives FB31P), Stops, Closers, Coordinator, Astragal, Seals / Gaskets (fire and smoke)

ADD-2 Item No. S-7 - 10 1300.01 – Exterior Signs

Add Specification Section 10 1300.01 – Exterior Signs in its entirety.

ADD-2 Item No. S-8 - 11 6600.01 – Divider Curtain

Add Specification Section 11 6600.01 – Divider Curtain in its entirety.

ADD-2 Item No. S-9 - 23 7413 – Packaged, Outdoor, Central-Station Air-Handling Units

2.1, A: Add “9. Valent” to the list of manufacturers.

CHANGES TO DRAWINGS

ADD-2 Item No. D-1 - APPLICABLE TO ALL DRAWINGS

Rated Wall lines did not print properly in many locations. See drawing AD2-01 attached.

All FEMA Safe Room outside perimeter walls are 2-Hour Rated Construction.

The closet in Utility D115 containing generator equipment is 2-Hour Rated Construction.

The FEMA hardened generator enclosure is 2-Hour Rated Construction along the existing building to 4'-0" perpendicular from the face of the existing building (both sides).

At Lobby/Corridor D117, the 8" wall that is part of the non-hardened (traditional) construction is 2-Hour Rated Construction from the corner of the FEMA Safe Room Storage D104 to Connector B147 (existing 2-Hour rated construction). Connector B147 is not sprinkled. The existing classrooms are not sprinkled.

At Lobby/Corridor D117, the 8" wall that is part of the non-hardened (traditional) construction is 2-Hour Rated Construction from the corner of the FEMA Safe Room Utility D115 to the existing fire wall at Lobby F102. The existing classrooms are not sprinkled. Lobby F102 is sprinkled.

At Corridor C147, the new metal stud and gypsum board walls at new Hall D127 is a 1-Hour Rated partition to maintain the existing 1-Hour Rated Corridor.

ADD-2 Item No. D-2 - AD101

General Demolition Note 13: Add “daily” to the end of the last sentence.

ADD-2 Item No. D-3 - A101

Add the following general note: In the construction access areas denoted by the concrete hatch (D120, D119, D139, and exterior), the contractor must maintain the surface of the access route throughout the entire project. Supplement the slab as required with gravel, etc. if/when the existing slab deteriorates due to the work.

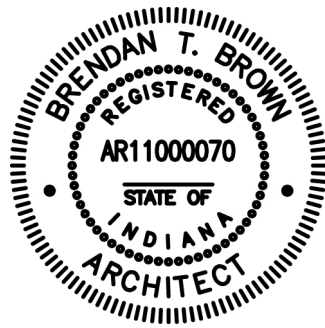
ADD-2 Item No. D-4 - A302

On Detail 1/A302, the base bid does not include the installation of metal wall panel on the existing gymnasium north wall. Delete the note “Align the new metal wall panel to match the existing metal wall panel on the fieldhouse. Inset and outset ribs shall match existing (field verify)” (top left of detail). Delete the note “Pre-finished metal wall panel” (top right of detail).

ADD-2 Item No. D-5 - A501

Door Schedule: Door D115B – Add a 90-minute fire rating to the door and frame. Change the Hardware set from “6” to “10”.

END OF ADDENDUM.



Brendan J. Brown

ALTERNATES

The undersigned also proposes to furnish or to omit all labor and materials necessary to complete work as required by the Alternate Bids, as provided in the specifications as follows:

Alternate No. 1:	<i>Electric Panel</i>	\$ _____
Alternate No. 2:	<i>Existing Gym Wall Water Infiltration</i>	\$ _____
Alternate No. 3:	<i>Divider Curtain</i>	\$ _____
Alternate No. 4:	<i>30-Year Roof Warranty</i>	\$ _____
Alternate No. 5:	<i>Multi-Purpose Room AV1 System</i>	\$ _____
Alternate No. 6:	<i>Weight Room Sound System</i>	\$ _____
Alternate No. 7:	<i>Athletic Director HVAC</i>	\$ _____
Alternate No. 8:	<i>Athletic Director Flooring</i>	\$ _____
Alternate No. 9:	<i>Acoustic Treatments in Multi-Purpose Room (E&S)</i>	\$ _____
Alternate No. 10:	<i>Acoustic Treatments in Multi-Purpose Room (W)</i>	\$ _____
Alternate No. 11:	<i>Weight Room Rubber Athletic Flooring</i>	\$ _____

ALLOWANCES

By initialing adjacent to amounts below, bidder acknowledges allowance amounts are included in the forgoing bid:

Brick Allowance within the **Base Bid** per Section 01 2113 **\$ 1,000 per 1000** initials _____

Contingency Allowance within the **Base Bid** per Section 01 2116 **\$ 400,000** initials _____

COMPLETION OF WORK

Undersigned guarantees, if awarded contract, to complete the work within _____ (540) calendar days.

COMPLETION OF WORK

Undersigned guarantees, if awarded the contract, to complete the work in accordance with the scheduling and phasing requirements as set forth in Specifications Section 01110 - Summary of Work-Single Contract.

DISCRIMINATION

The Contractor and his subcontractors, if any, shall not discriminate against or intimidate any employee, or applicant for employment, to be employed in the performance of this contract, with respect to any matter directly or indirectly related to employment because of race, religion, color, sex, national origin or ancestry. Breach of this covenant may be regarded as a material breach of the Contract.

CERTIFICATION OF USE OF UNITED STATES STEEL PRODUCTS (if applicable)

I, the undersigned bidder or agent as a contractor on a public works project, understand my statutory obligation to use steel

SECTION 07 1416 – EXISTING BRICK MASONRY WATERPROOFER

PART 1 - GENERAL

1.01 DESCRIPTION

- A. Work covered by this Section includes waterproofing coating applied to existing brick masonry surfaces, as indicated on the Drawings and specified herein.
- B. This work is to be included in the Base Bid if Alternate No. 2 – Existing Gym Wall Water Infiltration is not selected.

1.02 SUBMITTALS

A. Product Data:

- 1. Manufacturer's product data sheets, cutsheets, specifications and materials description.
- 2. Manufacturer's test data, stating coating performance expectations and limitations.
- 3. Manufacturer's Material Data Safety Sheets (MSDS).
- 4. Manufacturer's installation instructions, stating specific conditions requiring special attention and cautionary procedures required during application.
- 5. VOC content.

B. Certifications:

- 1. Manufacturer's certification that products meet or exceed the specified requirements.
- 2. Manufacturer's documentation of experience indicating compliance with specified qualification requirements.
- 3. Applicator's documentation of experience indicating compliance with specified qualification requirements.

C. Warranty:

- 1. Manufacturer's written warranty as specified.
- 2. Applicator's written warranty as specified.

1.03 DELIVERY, STORAGE AND HANDLING

- A. Deliver materials in manufacturer's original, unopened, containers.
- B. Transport, handle, store and protect products in strict accordance with the manufacturer's requirements and recommendations.
- C. Protect coating liquid from freezing. Discard and replace any product exposed to freezing conditions.

1.04 QUALITY ASSURANCE

A. Manufacturer and Supplier's Qualifications:

1. Manufacturer shall be a professional company specializing in manufacturing the specified products, with a minimum of fifteen (15) years of documented experience.
2. Applicator shall be a professional company specializing in performing the work of this Section, with a minimum of five (5) years of documented experience.

B. Regulatory Requirements:

1. Comply with applicable rules and regulations of Pollution Control regulatory Agency having jurisdiction regarding volatile organic compounds (VOC) and use of hydrocarbon solvents.

1.05 WARRANTY

- A. Manufacturer's written warranty agreeing to supply any/all materials as required for repair or reapplication of materials that fail to provide water repellency, as determined by the Architect.
- B. Applicator's written warranty agreeing to perform any/all work as required for repair or reapplication of materials that fail to provide water repellency, as determined by the Architect.
- C. Warranty period for both the manufacturer and applicator shall be seven (7) years from the date of Substantial Completion.

PART 2 - PRODUCTS

2.01 ACCEPTABLE MANUFACTURERS

- A. Provide products or approved equal, as approved by the Architect, from one of the following manufacturers:
 1. "United Gilsonite Laboratories (UGL)"

2.02 MATERIALS

A. Provide the following system, or approved equal:

1. For Use on Brick:
 - a. "United Gilsonite Laboratories (UGL)" – DRYLOK Floor and Wall Masonry Waterproof.

B. Description:

1. Clear latex based coating for brick that resists both positive and negative hydrostatic pressure and wind driven rain.
2. Formulated for use on bare masonry, vertical and horizontal surfaces.
3. Provides a durable, waterproof, easy to clean, non-yellowing high gloss finish.

4. Resistant to growth of mold and mildew.
 5. Ready-to-use without requirement for on-site mixing or dilution. Stir thoroughly before and during application. Thinning is prohibited.
 6. High abrasion resistance.
 7. Complies with current VOC requirements.
- C. Performance Data:
1. VOC content to be 100 grams/liter maximum.

PART 3 - EXECUTION

3.01 INSPECTION AND PREPARATION

- A. Contractor shall be responsible for inspection of site, approval of substrate surfaces, installation conditions and field measurements for this work.
- B. Verify that all conditions are as required and ready to receive work.
- C. Verify that all joint sealants are installed and cured.
- D. Verify that all surfaces to be coated are dry, clean, and free from efflorescence, oil, or other matter detrimental to application of coating. If efflorescence is present, remove it with DRYLOK ETCH or muriatic acid before proceeding.
- E. Report in writing any prevailing conditions that will adversely affect the satisfactory execution of the work. Do not proceed with work until any/all unsatisfactory conditions have been corrected.
- F. Commencement of work constitutes acceptance of all conditions by the Contractor and assumes the responsibility for correction of unsuitable conditions encountered at no additional costs to the Owner.
- G. Protect adjacent surfaces not scheduled to receive coating. If applied on unscheduled surfaces, remove immediately by methods approved by the manufacturer.
- H. Protect landscaping, property and vehicles from overspray and drift.

3.02 ENVIRONMENTAL CONDITIONS

- A. Do not apply products during the following conditions:
 1. Ambient temperature above 90 degrees F.
 2. Ambient temperature below 50 degrees F.
 3. Rain or temperatures below 40 degrees F are predicted for a period of 24 hours after application.
 4. Substrate surfaces frozen or surface temperatures are below 40 degrees F.
 5. Substrate surfaces have cured less than 30 days.
 6. Substrate surfaces not dry for a minimum of 24 hours prior to application.

3.03 APPLICATION

- A. Stir thoroughly during application.
- B. Apply coating in strict accordance with manufacturer's published instructions, using appropriate methods and coverage rates per coat.
- C. Apply coating directly on to bare masonry with a 3/8 inch nap roller, foam roller, DRYLOCK Brush, nylon bristle brush by spray equipment. Spray or back-brush first coat to fill pores of masonry and achieve uniformity.
- D. Two coats shall be applied, minimum. Allow first coat to cure 4 hours, then apply second coat by brush, spray, or roller. Apply second coat cross-directionally from first coat to achieve uniformity.
- E. Examine finished surface after two coats and inspect for any leaking, open pores, or pinholes. If observed, spot treat rejected areas, repaint entire surface with another coat of DRYLOK floor and masonry waterproofer and reinspect.

3.04 CLEANING

- A. Clean waterproofing material from tools and equipment with water. Remove cured materials by washing or scraping.

3.05 PROTECTION

- A. Protect work from damage of other trades during construction. Correct deficiencies or damage by cleaning or recoating, as approved by Architect.

SUBMITTAL CHECK LIST

- 1. Product Data.
- 2. Certifications.
- 3. Warranty.
- 4. Provide a mock-up in an inconspicuous location for review and approval by the Architect prior to proceeding with the remainder of the wall.

END OF SECTION 07 1416

SECTION 10 1300.01 - EXTERIOR SIGNS

PART 1 - GENERAL

1.01 WORK INCLUDED

- A. Exterior signage as indicated on the Drawings and specified herein, including:
 - 1. Pre-finished metal lettering.

1.02 SUBMITTALS

- A. Product Data:
 - 1. Submit manufacturer's product data, cutsheets, specifications and installation details to illustrate conformance with the specifications and for selection and/or verification of all sign layout and construction items.
- B. Signage Layout:
 - 1. Provide initial layout of signage and lettering, including the actual spacing and layout required for the surface to be installed on.
 - 2. Draw and indicate layout to scale, with field verified measurements included.
- C. Mounting Template:
 - 1. Once a final layout has been approved, supplier shall provide the Contractor with a full scale mounting template for proper positioning of studs and fasteners.
- D. Samples:
 - 1. Submit actual samples of colors as specified. Color charts alone are not acceptable.
 - 2. If not specified, submit samples of manufacturer's entire selection.
 - 3. Submit additional actual color samples as requested for selection of verification.

1.03 DELIVERY, STORAGE AND HANDLING

- A. Deliver and store letters in manufacturer's protective packaging.
- B. Handle letters so as to prevent damage to finish.

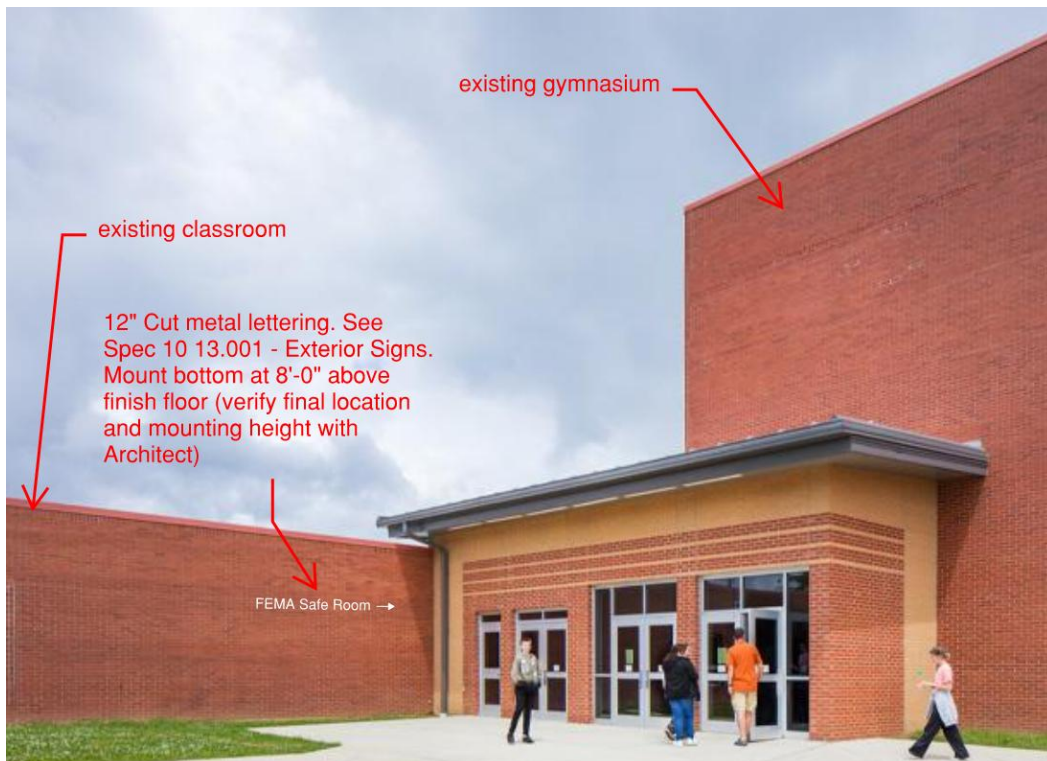
PART 2 - PRODUCTS

2.01 MATERIALS

- A. Cut Metal Lettering:
1. Basis of Specification: "ASI Sign Systems", LPS Series.
 2. Material: Aluminum, 3003 H14 alloy.
 3. Thickness: 1/4", sawn.
 4. Text: As indicated on Sign Schedule.
 5. Size: 12" Upper Case Letters, and associated Lower Case Letters.
 6. Font: As indicated on Drawings, or as selected from all manufacturer's standard fonts.
 7. Finish: Baked enamel finish. Color and finish to be selected from manufacturer's entire standard color range.
 8. Mounting: Spacers for 1/2" stand-off.
 9. Fasteners: Manufacturer's standard concealed anchoring device for wall type.
 10. Setting Cement: As recommended by manufacturer.

2.02 SIGN SCHEDULE

- A. Material: Cut Metal Lettering
- Text: FEMA Safe Room (with arrow symbol)
- Location: Mount on existing exterior brick veneer wall.
See conceptual image below (west of existing gymnasium).
Verify final location with Architect and Owner.
- Size: 12" upper case and associated lower case.
- Font: Helvetica.



- B. Material: Cut Metal Lettering
- Text: FEMA Safe Room (with arrow symbol)
- Location: Mount on existing exterior brick veneer wall.
See conceptual image below (east of existing fieldhouse entry).
Verify final location with Architect and Owner.
- Size: 12" upper case and associated lower case.
- Font: Helvetica.



PART 3 - EXECUTION

3.01 INSTALLATION

- A. Masonry Wall:
1. Drill 3/16" x 1-1/2" deep holes directly in masonry wall.
 2. Set pins in grout.
 3. Mount letters projected from masonry. Use spacing collars.

**PROJECT NO. 22-131.00
CRAWFORD COUNTY HS & MS - 2025 FEMA SAFE ROOM ADDITION
CRAWFORD COUNTY COMMUNITY SCHOOLS**

**EXTERIOR SIGNS
10 1300.01 - 4
04-14-2025**

SUBMITTAL CHECK LIST

1. Manufacturer's Literature.
2. Signage Layout.
3. Mounting Template.
4. Samples.

END OF SECTION 10 1300.01

SECTION 11 6600.01 – DIVIDER CURTAIN

PART 1 - GENERAL

1.01 DESCRIPTION

- A. Equipment:
 - 1. Dividing Curtain.
- B. See Drawings for locations and additional requirements for the dividing curtain.

1.02 SUBMITTALS:

- A. Shop Drawings:
 - 1. Indicate dimensions, materials, gauges, and finishes.
 - 2. Indicate anchorage details.
 - 3. Colors to be selected by Architect from manufacturer's entire selection, where applicable.
- B. Manufacturer's Literature:
 - 1. Product catalog and brochure information.
 - 2. Material Safety and Data Sheets.
- C. Color Charts and Samples.
 - 1. If indicated, provide colors as selected.
 - 2. If not indicated, colors are to be selected by Architect from manufacturer's entire standard selection.

PART 2 - PRODUCTS

2.01 DIVIDING CURTAIN

- A. Acceptable Manufacturers:
 - 1. "Draper", Top-Roll Divider.
 - 2. "Performance Sport Systems", #4040XL; Top-Roll Divider Curtain.
 - 3. "AALCO Mfg. Co.", #TRU-110; Top-Roll Divider Curtain.
 - 4. "Porter", #92082000, Center-Roll Divider Curtain.
- B. Provide at all locations and configurations as shown on the Drawings.
- C. Verify overall height as required for closure of the full height of the multi-purpose room, floor to structure.

Bottom batten pipe shall be located to provide 2" clear from finished floor surface.

- D. Verify overall length as required for closure of area across the gym when the bleachers are retracted. Unless otherwise indicated, provide 4'-0" clear at each end of curtain for egress between sides of curtain.
- E. Provide intermediate framing as required to support curtain between joists.
- F. Solid vinyl to be provided for the bottom 10'-0" of curtain, comprised of durable vinyl-coated polyester, average 18 oz. per square yard weight.
- G. Mesh to be provided for the remainder of curtain above the solid vinyl, comprised of vinyl-coated polyester mesh woven from .025 yarn in a one-over-one weave pattern, average 9 oz. per square yard weight. The yarn is comprised of 80% pigmented vinyl and 20% 840 denier polyester.
- H. All seams to be electronically welded with a 1" full contact weld. Outer edge hems shall be triple turned with double welds.
- I. Curtain shall be rolled on a 1-3/4" minimum diameter round batten which is secured to the bottom edge of the curtain with an aluminum stop strip.
- J. Use vinyl fabric, in triple thickness and double welded to the top edge of the mesh, to form a 6" wide pocket to accommodate a 1-5/8" diameter round batten for curtain support.
- K. Suspension from roof support member shall be accomplished with manufacturer's clamp type malleable or heavy gauge stamped lug fitting.
- L. Rolling action shall be achieved by belt being wound onto a rotating drive pipe. Hoists belts shall be 5" wide polyester webbing offering a high tensile strength per belt. Each belt is to be straight and true to insure proper wrapping of the belt onto the drive pipe. Belts shall be located a maximum of 15'-0" o.c. Lift belts shall be attached to the drive pipe, travel under the bottom batten and terminate at the top batten.
- M. Drive pipe shall rotate in drive pipe support assembly, located maximum 10'-0" o.c. Drive pipe shall be powered by an electric winch motor operating mechanism.
- N. Motor Operator:
 - 1. Provide one of the following acceptable products:
 - a. "Draper", #C129.003; Gym Divider Winch.
 - b. "Performance Sport Systems", #4002; Hoist.
 - c. "AALCO Mfg. Co.", Roll-Up Divider Curtain Hoist.
 - d. "Porter", 3/4 HP Electric Operator For Dividing Curtains and Batting Cages.
 - 2. Instantly-reversing, 120 volt, single-phase electric winch capacitor motor with built-in thermal overload protection, 3/4 HP minimum.
 - 3. Wall-mounted key switch control. Locate switch per Architect where and how indicated on drawings.
- O. Safety Support:
 - 1. Provide one of the following acceptable products:
 - a. "Draper", #504301, Curtain Lok; Divider Curtain Safety Device.

- b. "Performance Sport Systems", Curtain Safety Support Device.
 - c. "AALCO Mfg. Co.", Curtain Safety Support Device.
 - d. "Porter", #10796-000, Line Shaft Safety Lock.
2. Directly speed sensitive to automatically lock curtain drive shaft in position, at any point of travel of operation, due to a sudden surge of speed created by a possible malfunction of the hoisting apparatus, winch, cable, support, fittings, etc.
 3. Incorporate belt rated to support a load of the entire structure in case of curtain support failure. Secure cable to support structure and building structural system.
- P. Color of curtain to be selected by Architect from manufacturer's entire selection.
- Color of mesh to be selected by Architect from manufacturer's entire selection.

PART 3 - EXECUTION

3.01 INSTALLATION

- A. Divider Curtain:
1. Install all items in accordance with manufacturer's published literature and recommendations.
 2. Coordinate with locations and details as indicated on Drawings.
 3. Install per any additional information or requirements as specified herein.

SHOP DRAWING CHECKLIST

1. Shop Drawings.
2. Manufacturer's Literature.
3. Color Charts and Samples.

END OF SECTION 11 6600.01

NEW CONSTRUCTION RATED WALLS

NEW 2-HOUR RATED WALL AT GENERATOR EQUIPMENT (8" CMU) TO 4'-0" FROM EXISTING BUILDING

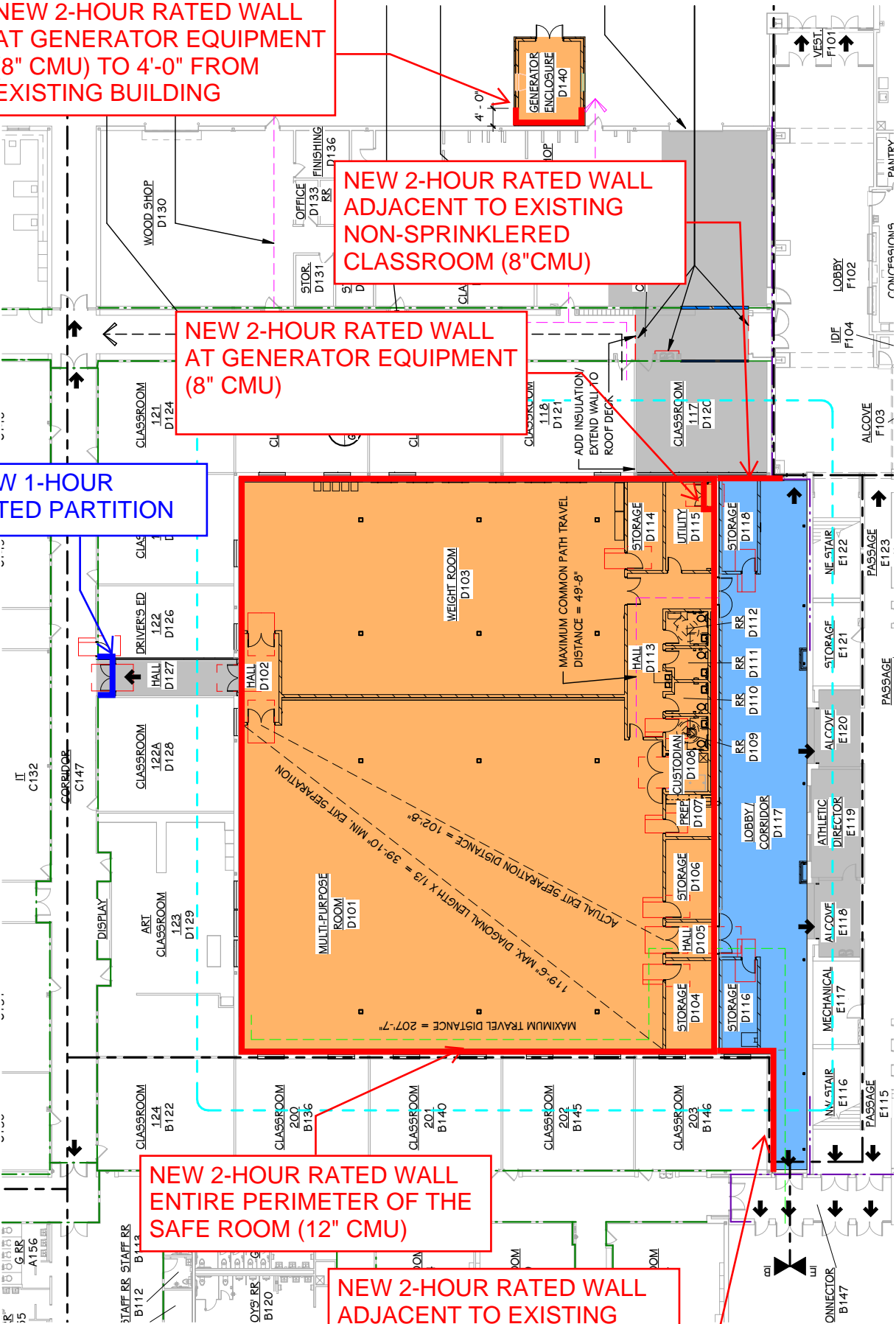
NEW 2-HOUR RATED WALL ADJACENT TO EXISTING NON-SPRINKLERED CLASSROOM (8"CMU)

NEW 2-HOUR RATED WALL AT GENERATOR EQUIPMENT (8" CMU)

NEW 1-HOUR RATED PARTITION

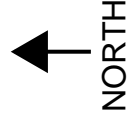
NEW 2-HOUR RATED WALL ENTIRE PERIMETER OF THE SAFE ROOM (12" CMU)

NEW 2-HOUR RATED WALL ADJACENT TO EXISTING NON-SPRINKLERED CLASSROOM (8"CMU)



5-13-2025

PROJECT TITLE
2025 FEMA SAFE ROOM ADDITION -
CRAWFORD COUNTY HIGH AND MIDDLE
SCHOOL



AD2-01