

SOUTH RIPLEY ELEMENTARY

Carpet Replacement

1568 S Benham Rd.
Versailles, Indiana 47042

South Ripley Community School Corporation

SOUTH RIPLEY COMMUNITY SCHOOLS

ROB MOORHEAD
LANA MILLER
GIL LANDWEHR

SUPERINTENDENT
BUSINESS MANAGER
TRANSPORTATION BUILDING
AND GROUNDS DIRECTOR

SO. RIPLEY ELEMENTARY SCHOOL

AMY LINKEL
RYAN LAUBER

PRINCIPAL
ASST. PRINCIPAL

BOARD OF SCHOOL TRUSTEES

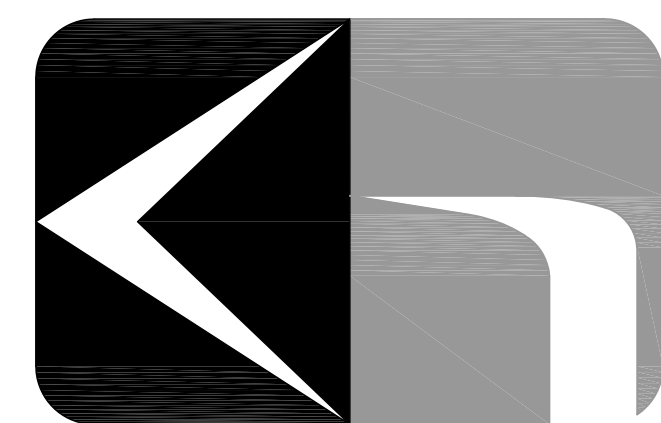
TIM TAYLOR
RANDEL MCINTOSH
BECKY TURNER
JEFF CORNETT
ROBERT GARCIA
CAROL HOLZER
STEVE PATRICK

PRESIDENT
VICE-PRESIDENT
SECRETARY
MEMBER
MEMBER
MEMBER
MEMBER

DRAWING INDEX

INTERIORS DRAWINGS

I-100 OVERALL FLOOR PLAN & FINISH SCHEDULE
I-101 FINISH PLAN - AREA 'A'
I-102 FINISH PLAN - AREA 'B'
I-103 FINISH PLAN - AREA 'C'



KovertHawkins
architects



General Demolition Notes

- CONTRACTOR RESPONSIBLE FOR PATCHING, REPAIRING, AND REPAINTING ANY WALL SURFACES DAMAGED DURING DEMOLITION OF FLOOR AND/OR BASE.
- SEE SPECIFICATIONS SECTION 01738-SELECTIVE DEMOLITION FOR FURTHER REQUIREMENTS OF DEMOLITION WITHIN SCOPE OF WORK.
- COORDINATE ALL DEMOLITION WITH PHASING, ARCHITECT, AND OWNERS REPRESENTATIVE.
- WHERE WALLS, FINISHES, EQUIPMENT, MATERIALS, OR CONSTRUCTION OF ANY TYPE IS INDICATED TO BE REMOVED, THE CONTRACTOR IS TO PATCH AND REPAIR ALL SURFACES TO REMAIN TO MATCH EXISTING ADJACENT SURFACES IN ALL ASPECTS. REPAIRED AREAS ARE TO BLEND INTO THE ADJACENT SURFACES AND NOT APPEAR TO BE A PATCH.
- CONTRACTOR IS RESPONSIBLE FOR FIELD VERIFYING ALL EXISTING CONDITIONS.
- CONTRACTOR SHALL PROTECT ALL ITEMS AND SURFACES TO REMAIN OR THAT ARE NOT INCLUDED IN RENOVATION SCOPE OF WORK, INCLUDING ALL ITEMS INTERIOR AND EXTERIOR TO THE BUILDING. PROTECT ALL SURFACES AND FINISHES TO REMAIN ADJACENT TO RENOVATION WORK.
- DEMOLITION DRAWING IS INTENDED TO ASSIST THE CONTRACTOR IN UNDERSTANDING THE GENERAL DEMOLITION REQUIRED THROUGHOUT. CONTRACTOR SHALL REMOVE ANY ALL ITEMS OR COMPONENTS AS REQUIRED TO COMPLETE THE RENOVATION SCOPE OF WORK, WHETHER OR NOT SPECIFICALLY INDICATED OR NOT.
- CONTRACTOR IS RESPONSIBLE FOR PATCHING AND REPAIRING ALL INTERIOR SURFACES DISTURBED BY DEMOLITION OR RENOVATION WORK. ALL ADJACENT SURFACES IN ALL ASPECTS TO LIKE-NEW CONDITION, WHETHER PATCHING IS SPECIFICALLY INDICATED OR NOT.

General Finish Notes

- EXISTING ALUMINUM AND OR ZINC TRANSITION STRIPS SURROUNDING AREAS OF EXISTING CERAMIC TILE TO REMAIN.
- CONTRACTOR IS RESPONSIBLE TO PROVIDE A SMOOTH AND LEVEL TRANSITION BETWEEN DIFFERING FLOOR FINISHES. CONTRACTOR TO PROVIDE TRANSITION STRIP BETWEEN ALL DISSIMILAR FLOORING MATERIALS. SEE SPECIFICATIONS FOR FLOORING TRANSITION STRIPS.
- ALL NOTATIONS ARE INTENDED TO INDICATE FINISHES FOR ENTIRE AREA OF ITEM AND ALL EXPOSED SURFACES, INCLUDING WALL-TO-WALL, FLOOR-TO-CEILING, ENTIRE LENGTH OF SURFACE, ALL SIDES, ALL EDGES, AND ALL ASSOCIATED COMPONENTS, UNLESS OTHERWISE NOTED.
- ALL COLUMNS IN ROOMS AND AREAS ARE TO BE FINISHED TO MATCH WALL SURFACES OF THAT SPACE OR ADJACENT WALLS, UNLESS OTHERWISE NOTED.
- SEE SPECIFICATIONS SECTION 01230-ALTERNATES FOR FURTHER REQUIREMENTS AND CLARIFICATIONS AS TO SCOPE OF WORK IN EACH ALTERNATE BID PACKAGE.

FINISH SCHEDULE

Flooring

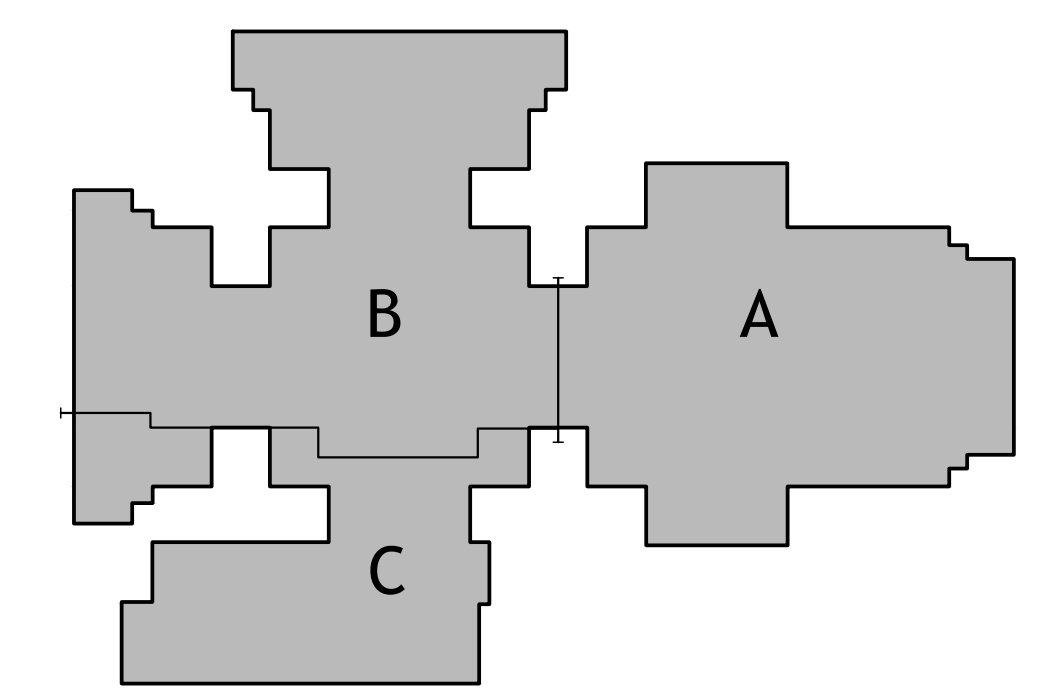
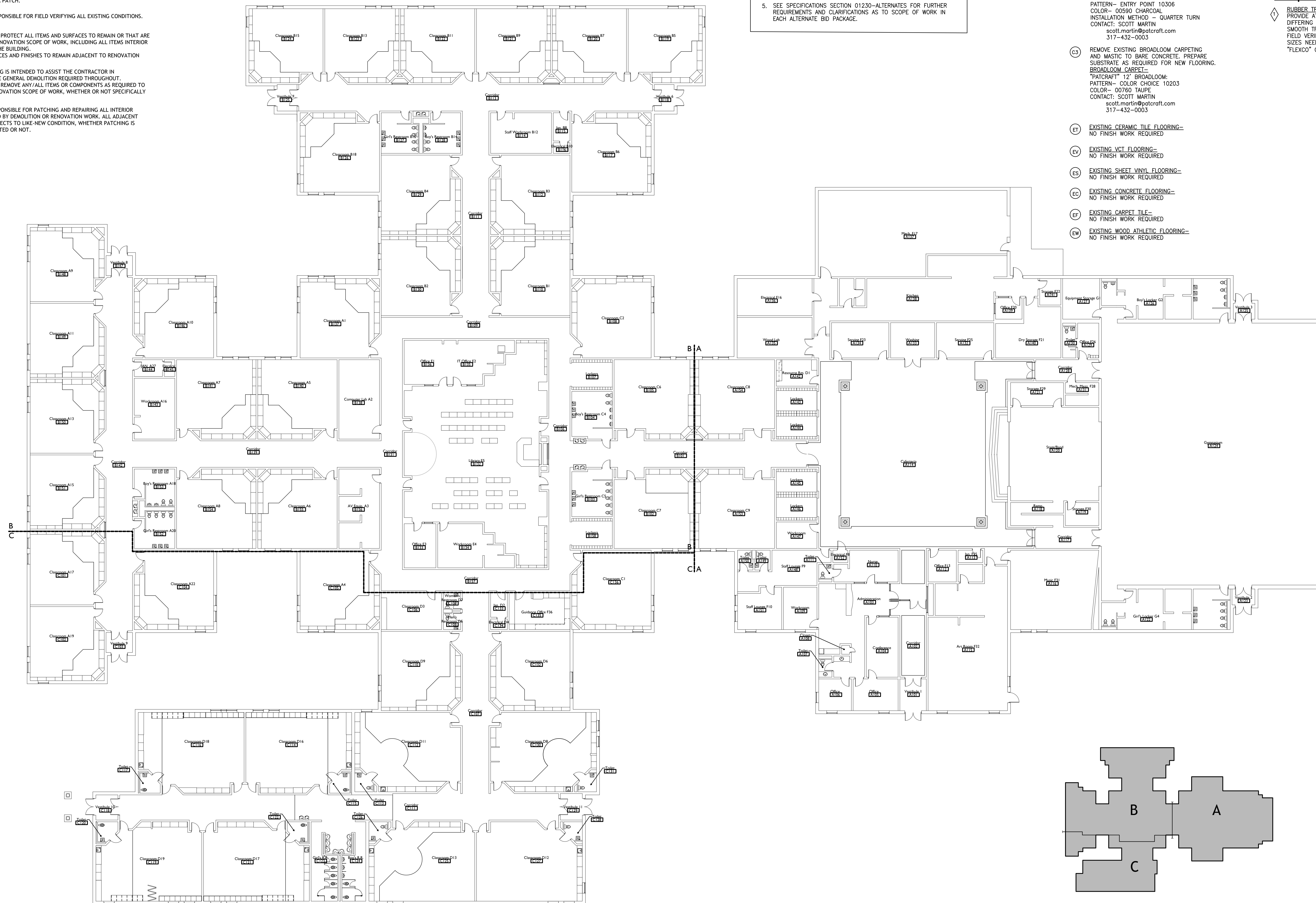
- (C1) REMOVE EXISTING BROADLOOM CARPETING AND MASTIC TO BARE CONCRETE. PREPARE SUBSTRATE AS REQUIRED FOR NEW FLOORING. MODULAR CARPET TILE - "PATCRAFT" 24"x24" MODULAR TILES: PATTERN - EASY ON THE EYES 10227 COLOR - BIBBIDY-B08BDI-800 00507 INSTALLATION METHOD - QUARTER TURN CONTACT: SCOTT MARTIN scott.martin@patcraft.com 317-432-0003
- (C2) REMOVE EXISTING BROADLOOM CARPETING AND MASTIC TO BARE CONCRETE. PREPARE SUBSTRATE AS REQUIRED FOR NEW FLOORING. MODULAR WALK-OFF CARPET TILE - "PATCRAFT" 24"x24" MODULAR TILES: PATTERN - ENTRY POINT 10308 COLOR - 00590 CHARCOAL INSTALLATION METHOD - QUARTER TURN CONTACT: SCOTT MARTIN scott.martin@patcraft.com 317-432-0003
- (C3) REMOVE EXISTING BROADLOOM CARPETING AND MASTIC TO BARE CONCRETE. PREPARE SUBSTRATE AS REQUIRED FOR NEW FLOORING. BROADLOOM CARPET - "PATCRAFT" 12" BROADLOOM: PATTERN - COLOR CHOICE 10203 COLOR - 00760 TAUPE CONTACT: SCOTT MARTIN scott.martin@patcraft.com 317-432-0003
- (ET) EXISTING CERAMIC TILE FLOORING - NO FINISH WORK REQUIRED
- (EV) EXISTING VCT FLOORING - NO FINISH WORK REQUIRED
- (ES) EXISTING SHEET VINYL FLOORING - NO FINISH WORK REQUIRED
- (EC) EXISTING CONCRETE FLOORING - NO FINISH WORK REQUIRED
- (EP) EXISTING CARPET TILE - NO FINISH WORK REQUIRED
- (EW) EXISTING WOOD ATHLETIC FLOORING - NO FINISH WORK REQUIRED

Base

- (WB1) CAREFULLY REMOVE EXISTING 4" HIGH RUBBER BASE FROM ENTIRE ROOM EXCEPT WHERE OTHERWISE NOTED. 4-1/2" RUBBER BASE - "FLEXCO"; TRADITIONAL 4-1/2" HIGH COLOR - TO BE SELECTED BY ARCHITECT
- (WB2) EXISTING BASE FINISH - BASE TO REMAIN
- (WB3) EXISTING BRICK WAINSCOT - NO NEW WALL BASE REQUIRED

Specialties

- (WB4) RUBBER TRANSITION STRIP - PROVIDE AT TRANSITIONS BETWEEN DIFFERING FLOORING MATERIALS FOR SMOOTH TRANSITION. FIELD VERIFY EXACT PROFILE AND SIZES NEEDED. "FLEXCO" COLOR - TO BE SELECTED BY ARCHITECT



Key Plan
No Scale



Overall Floor Plan
full size plot scale: 1/16"=1'-0"

Notice
The Architect/Engineer does not define the scope of individual trades, subcontractors, material suppliers, or vendors. Any sheet numbering system used which identifies disciplines is solely for the Architect/Engineer's convenience, and is not intended to define a subcontractor's scope of work. Information regarding individual trades, subcontractors, material suppliers, and vendors may be detailed, described and indicated at different locations throughout these documents. No consideration will be given to requests for change orders for failure to obtain and review the complete set of drawings and specifications when preparing bids, prices, and quotations.

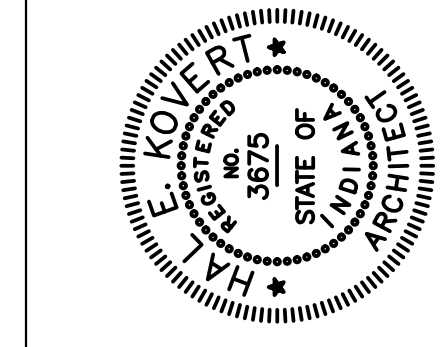
KovertHawkins Architects
157 Walnut Street
Jeffersonville, IN 47130
812-286-9954 FAX
www.koverthawkins.com



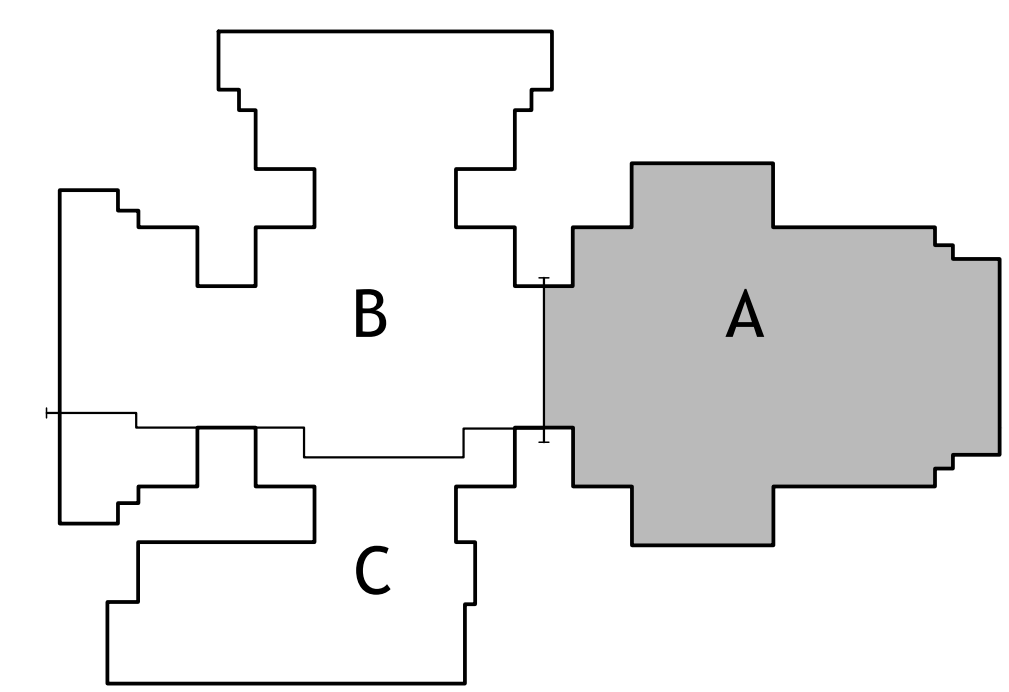
KovertHawkins
architects

Drawn	SK
Checked by	HK
Project No.	1839 01
Date	07/14/2018

Revisions
1
2
3
4
5
6



Carpet Replacement
South Ripley Elementary
Versailles, Indiana 47042
1568 S Benham Rd
South Ripley Community Schools

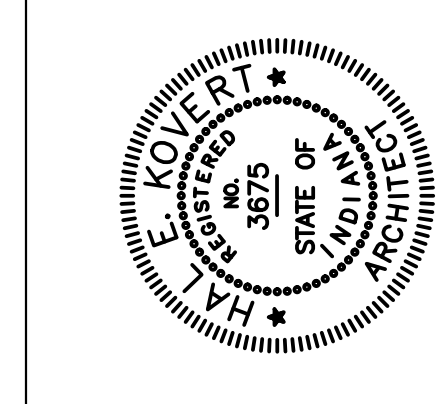


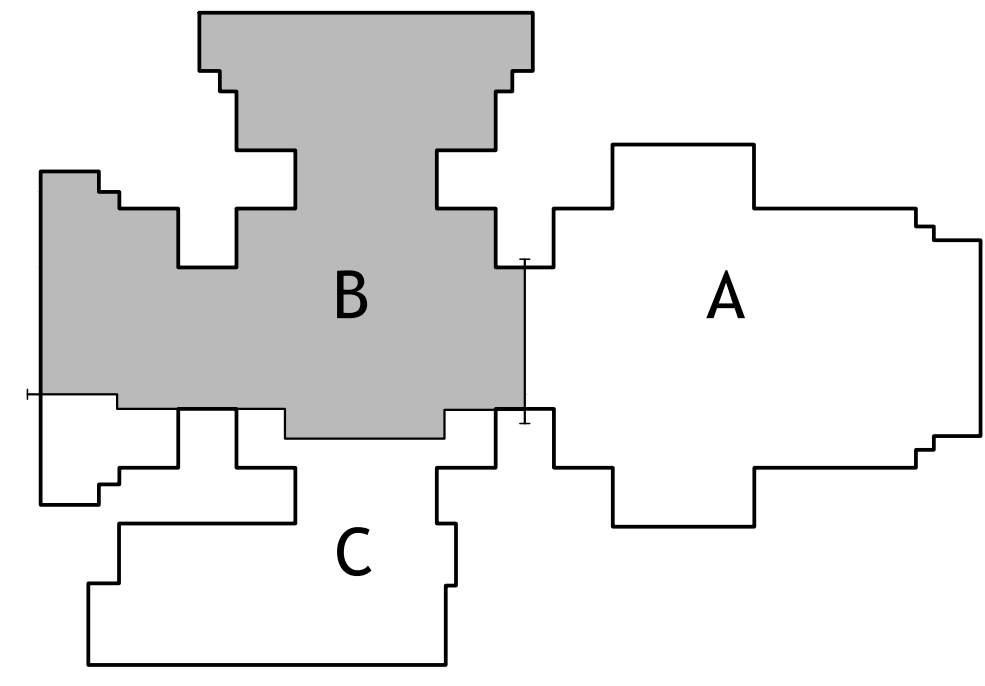
Key Plan
No Scale

Notice
The Architect/Engineer does not define the scope of individual trades, subcontractors, material suppliers, or vendors. Any sheet numbering system used which identifies disciplines is solely for the Architect/Engineer's convenience, and is not intended to define a subcontractor's scope of work. Information regarding individual trades, subcontractors, material suppliers, and vendors may be detailed, described and indicated at different locations throughout these documents. No consideration will be given to requests for change orders for failure to obtain and review the complete set of drawings and specifications when preparing bids, prices, and quotations.

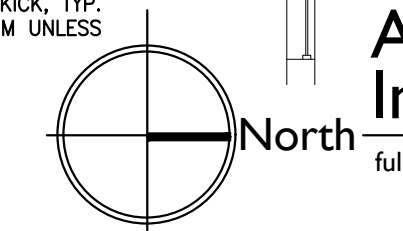
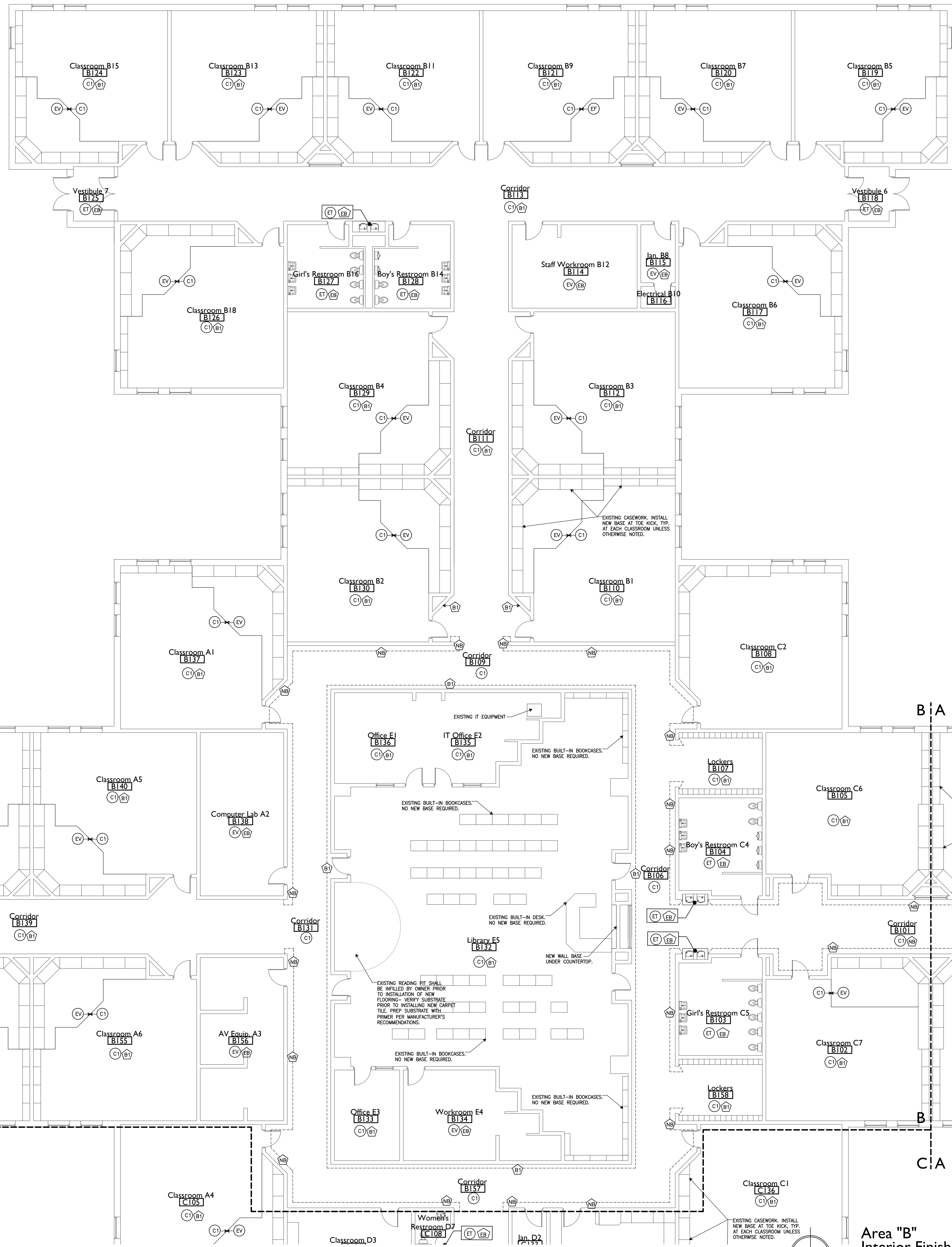
North
Area "A"
Interior Finish Plan
full size plot scale: 1/8"=1'-0"
0 4'-0" 8'-0"

Drawn	SK
Checked By	HK
Project No.	1839.01
Date	07/14/2018





Key Plan
No Scale



Area "B"
Interior Finish Plan
Full size plot scale: 1/8"=1'-0"

Notice
The Architect/Engineer does not define the scope of work for individual trades, subcontractors, material suppliers, or vendors. Any sheet numbering system used which references disciplines is solely for the Architect/Engineer's convenience, and is not intended to define a subcontractor's scope of work. Information regarding individual trades, subcontractors, material suppliers, and vendors may be detailed, described and indicated at different locations throughout these documents. No consideration will be given to requests for change orders for failure to obtain and review the complete set of drawings and specifications when preparing bids, prices, and quotations.

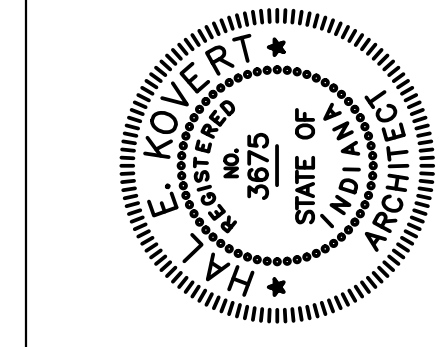
KovertHawkins Architects
ALL RIGHTS RESERVED
All information in this document is the confidential and proprietary information of KovertHawkins Architects, Inc. and shall not be copied, reproduced, distributed, sold, or otherwise disseminated without the prior written consent of KovertHawkins Architects, Inc. without the prior written consent of KovertHawkins Architects, Inc. without the prior written consent of KovertHawkins Architects, Inc.



KovertHawkins
architects

Drawn	SK
Checked By	HK
Project No.	1839 01
Date	07/14/2018

Revisions
1
2
3
4
5
6



Carpet Replacement
South Ripley Elementary
Versailles, Indiana 47042
1568 S Benham Rd
South Ripley Community Schools

