



## Addendum No. 2

page 1

**Project:** 2017 Renovations  
**Dillsboro Elementary**  
Dillsboro, Indiana

**Proj. No:** 1649.01

**Date:** August 14, 2017

**This addendum is a part of the bid documents. Acknowledge receipt on the Proposal Form.**

### Specifications

1. Section 08410 - Aluminum Storefront System  
Article 2.02, paragraph A, change item 4 to read as follows:  
4. Color: Light Bronze
2. Section 08520 - Aluminum Windows  
Article 2.01, paragraph A, add the following:  
12. "Litex Incorporated"
3. Section 08520 - Aluminum Windows  
Article 2.02, paragraph A, change item 4 to read as follows:  
4. Color: Light Bronze
4. Section 08800 - Aluminum Windows  
Article 2.02, paragraph G, change item 3.b. to read as follows:  
b. Tempered safety glass.  
  
Article 2.02, paragraph G, change item 4.b. to read as follows:  
b. Laminated safety glass.  
  
Delete Item 6 in its entirety.
5. Section 08950 - Insulated Translucent Window System  
Article 2.01, paragraph A, add the following:  
4. CPI Daylighting  
(800) 759-6985 (847) 816-0425 fax
6. Specification 09510 - Acoustical Ceilings  
Article 2.02, paragraph A, add "USG", Radar Illusion Two/24 #2842 as an acceptable model.

### Drawings

1. ALL A-400 Series Drawings  
In Girls Locker C119, Girls Restroom C115 and Boys Restroom C109: Add the following note:  
Modify existing ceiling grid in order to install new window unit. Replace grid to match existing as required.
2. I-101: Area "A" Interior Finish Plan  
Replace existing drawing in its entirety with attached drawing; refer to clouded areas for revisions.  
  
Revise Classroom floor patterns per attached Drawing AD-2a. Floor pattern is typical for all Classrooms within Area "A". Slight variations from room to room occur. Refer to revision clouds for all rooms scheduled to receive pattern.
3. I-102: Area "B" Interior Finish Plan  
Replace existing drawing in its entirety with attached drawing; refer to clouded areas for revisions.  
  
Revise Classroom floor patterns per attached Drawing AD-2b. Floor pattern is typical for all Classrooms within Area "B". Slight variations from room to room occur. Refer to revision clouds for all rooms scheduled to receive pattern.



**Addendum No. 2**

4. I-103:Area "C" Interior Finish Plan

Replace existing drawing in its entirety with attached drawing; refer to clouded areas for revisions.

Revise Classroom floor patterns per attached Drawing AD-2b. Floor pattern is typical for all Classrooms within Area "C". Slight variations from room to room occur. Refer to revision clouds for all rooms scheduled to receive pattern.

Prepared by,

A handwritten signature in black ink, appearing to read "Hal E. Kovert".

**Hal E. Kovert, AIA**

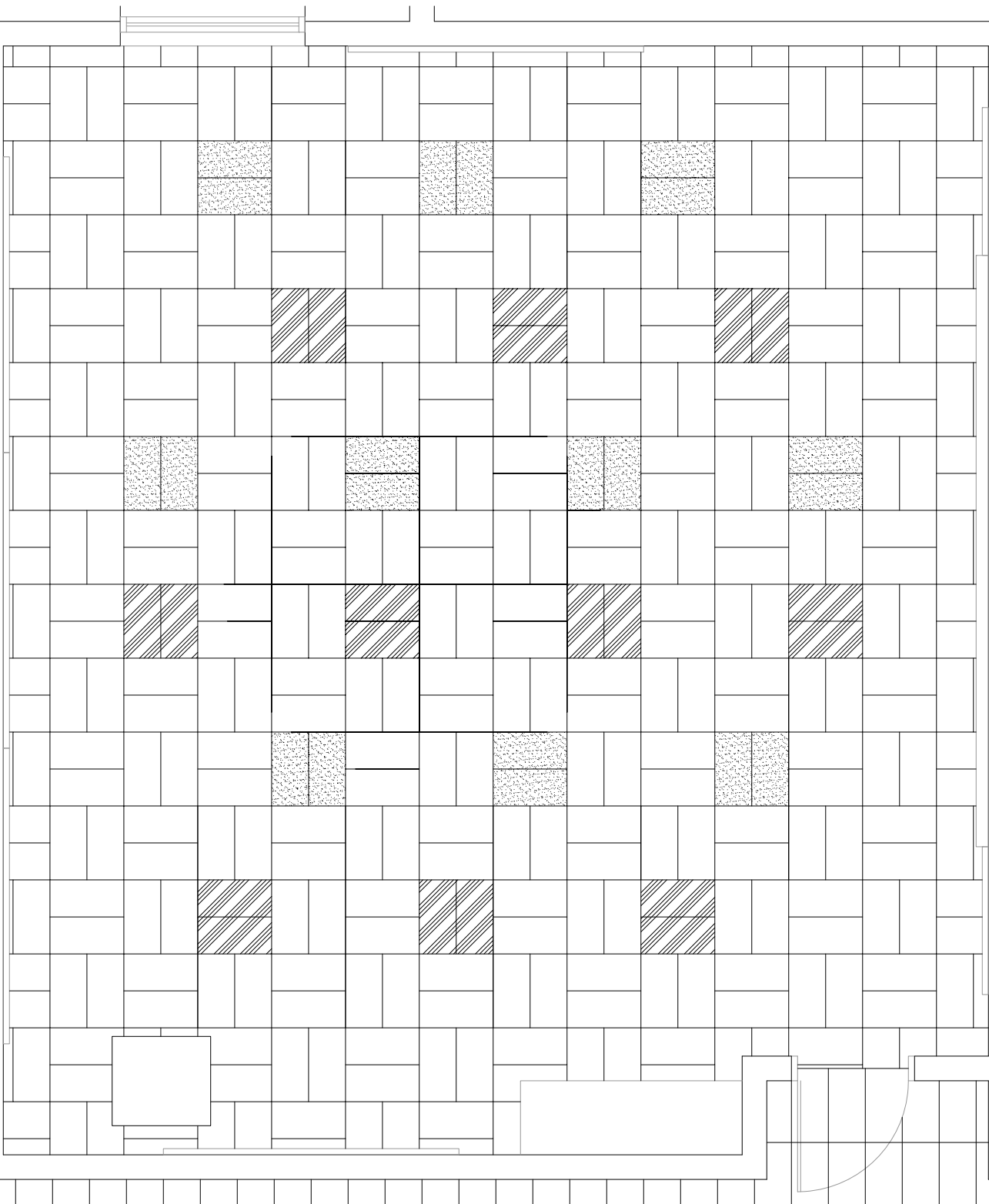


file: 1649.01/E-1

Attachments: Drawings: AD-2a, AD-2b, I-101, I-102, and I-103

Total Pages: (7) Seven

**End of Addendum No. 2**



630 Walnut Street  
Jeffersonville, IN 47130  
812.282.9554  
812.282.9171 FAX  
www.koverthawkins.com



**KovertHawkins**  
architects

Drawn	AH
Checked By	HK
Project No.	1649.01
Date	08/14/2017

Revisions	1
	2
	3
	4
	5
	6

**2017 Renovations**  
**Dillsboro Elementary School**  
13200 North Street  
Dillsboro, Indiana 47018  
South Dearborn Community School Corporation

NOTE: REFER TO LVT PATTERN LEGEND ON I-201 FOR CLARIFICATION OF TILE COLORS

# Typical "A" Wing Classroom Floor Pattern

I  
AD-2a

full size plot scale: 1/4"=1'-0"

Sheet  
**AD-2a**

630 Walnut Street  
Jeffersonville, IN 47130  
812.282.9554  
812.282.9171 FAX  
www.koverthawkins.com



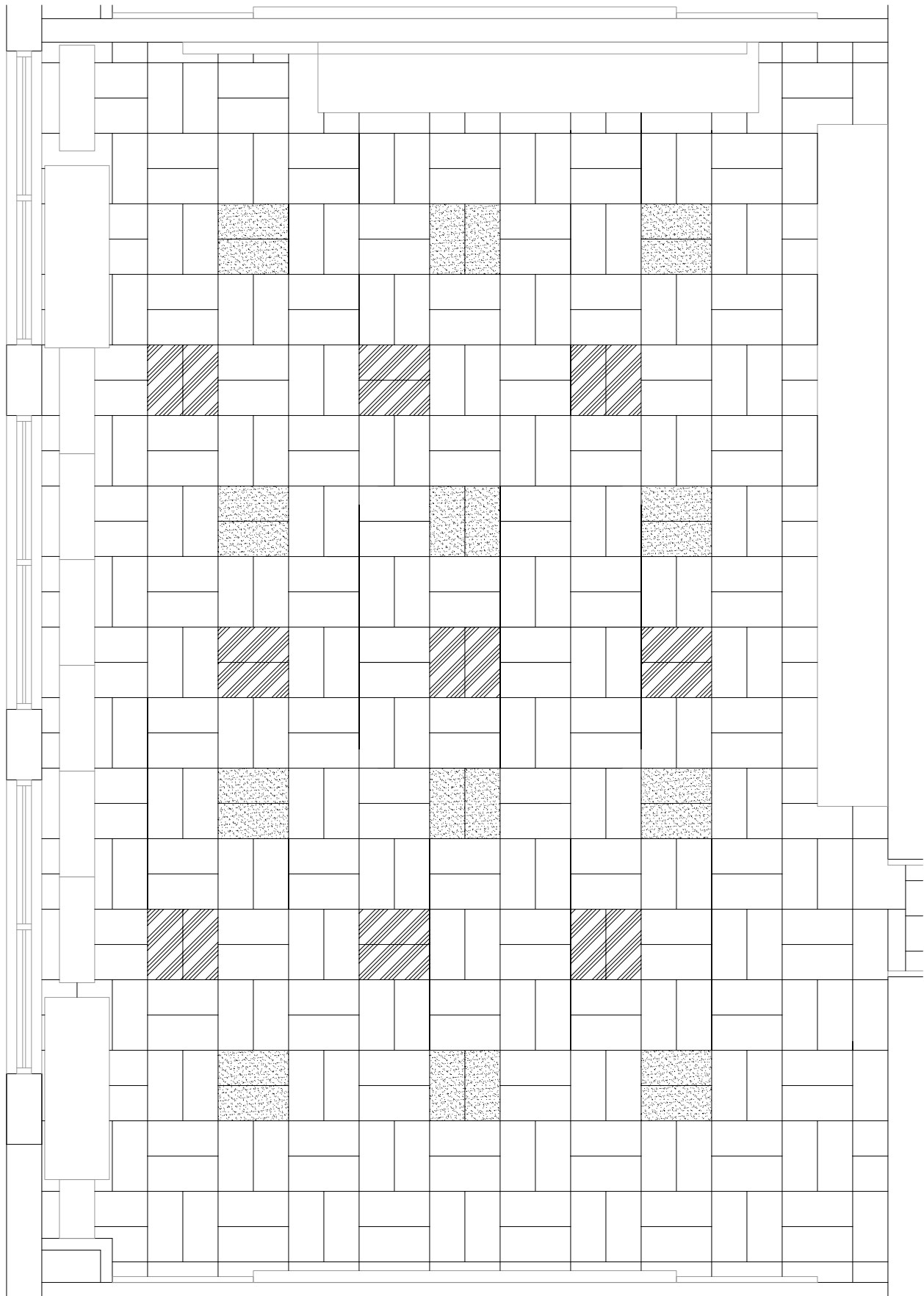
**KovertHawkins**  
architects

Drawn	AH
Checked By	HK
Project No.	1649.01
Date	08/14/2017

Revisions	1
	2
	3
	4
	5
	6

Certified By

**2017 Renovations**  
**Dillsboro Elementary School**  
13200 North Street  
Dillsboro, Indiana 47018  
South Dearborn Community School Corporation



NOTE: REFER TO LVT PATTERN LEGEND ON I-201 FOR CLARIFICATION OF TILE COLORS

# Typical "B" & "C" Wing Classroom Floor Pattern

I  
AD-2b

full size plot scale: 1/4"=1'-0"

Sheet  
**AD-2b**

**General Finish Notes**

1. CONTRACTOR IS RESPONSIBLE TO PROVIDE A SMOOTH AND LEVEL TRANSITION BETWEEN DIFFERING FLOOR FINISHES. CONTRACTOR TO PROVIDE TRANSITION STRIP BETWEEN ALL DISSIMILAR FLOORING MATERIALS. SEE SPECIFICATIONS FOR FLOORING TRANSITION STRIPS.
2. ALL NOTATIONS ARE INTENDED TO INDICATE FINISHES FOR ENTIRE AREA OF ITEM AND ALL EXPOSED SURFACES, INCLUDING WALL-TO-WALL, FLOOR-TO-CEILING, ENTIRE LENGTH OF SURFACE, ALL SIDES, ALL EDGES, AND ALL ASSOCIATED COMPONENTS, UNLESS OTHERWISE NOTED.
3. ALL COLUMNS IN ROOMS AND AREAS ARE TO BE FINISHED TO MATCH WALL SURFACES OF THAT SPACE OR ADJACENT WALLS, UNLESS OTHERWISE NOTED.
4. ALL ITEMS IN EXPOSED CEILING AREAS ARE TO BE FINISH PAINTED THE SAME COLOR SO AS TO CREATE A UNIFORM AND CONSISTENT AESTHETIC IN THE CEILING. INCLUDES, BUT NOT LIMITED TO, ALL STRUCTURAL COMPONENTS, DECKING, PIPING, CONDUIT, ELECTRICAL, INSULATION, MECHANICAL EQUIPMENT, MISCELLANEOUS ITEMS, HANGERS, SUPPORTS, ETC.
5. SEE SPECIFICATIONS SECTION 01230-ALTERNATES FOR FURTHER REQUIREMENTS AND CLARIFICATIONS AS TO SCOPE OF WORK IN EACH ALTERNATE BID PACKAGE.

**Flooring**

- (C1) MODULAR CARPET TILE-  
"PATRCRAFT" 24"x24" MODULAR TILES;  
PATTERN- COLOR POP #0381  
COLOR- SATELLITE POP 00520  
INSTALLATION METHOD- QUARTER-TURN
- (C2) MODULAR WALK-OFF CARPET TILE-  
"INTERFACE" 500M X 500M  
PATTERN- SUPER FLO 412 6090002504  
COLOR- GREY 809159  
INSTALLATION METHOD- 1/2 TURN
- (V1) LUXURY VINYL TILE-  
"MOHAWK GROUP" MATUTO SERIES 12"x24"  
COLOR 1- SONIC SILVER #927 (FIELD COLOR)  
COLOR 2- GREEN GRASS #646  
COLOR 3- BLUE NIGHT #555  
COLOR 4- VIVID VIOLET #453  
COLOR 5- RED HOT #353  
COLOR 6- OUTRAGEOUS ORANGE #252  
COLOR 7- UNMELLOW YELLOW #121  
COLOR 8- GREY GRANITE #959  
SEE 1-200 SHEETS FOR PATTERN
- (V2) LUXURY VINYL TILE-  
"MOHAWK GROUP" MATUTO SERIES 12"x24"  
COLOR- SONIC SILVER #927  
INSTALL IN BASKETWEAVE PATTERN THROUGHOUT
- (PT) COLORBODY PORCELAIN MOSAIC TILE-  
"FLORIDA TILE" TILES 2-1/2" X 2-1/2"  
COLOR- MARINE FOG 28115  
GROUT COLOR TO BE SELECTED BY ARCHITECT  
25-PIECE MOSAIC ON 12"x12" MESH-MOUNT SHEET
- (EF) EXISTING FLOORING-  
NO FINISH WORK REQUIRED

**Flooring Cont'd**

- (ET) EPOXY TERRAZZO-  
"TERROROXY"  
COLOR 1: WHITE #2001  
25% ITALIAN WHITE #1  
25% ITALIAN WHITE #0  
COLOR- 20 CHARCOAL
- (E1) 6" EPOXY TERRAZZO BASE-  
COLOR: STEEL WOOL #6650  
100% BLUE COAL #0, #1  
100% TARA BLUE GLASS #1  
5% CHUNKY ORANGE #1  
5% FW MOP #2  
10% BUTTERCUP GLASS #1  
5% LAVENDER #1
- (E2) 6" EPOXY TERRAZZO BASE-  
COLOR: STEEL WOOL #6650  
100% BLUE COAL #0, #1  
100% TARA BLUE GLASS #1  
5% CHUNKY ORANGE #1  
5% FW MOP #2  
10% BUTTERCUP GLASS #1  
5% LAVENDER #1
- (E3) EXISTING BASE FINISH-  
NO FINISH WORK REQUIRED UNLESS NOTED
- (E4) 6" EPOXY TERRAZZO BASE-  
COLOR: STEEL WOOL #6650  
80% BLUE COAL #0, #1  
20% ONE-SIDED MIRROR #1
- (E5) 6" EPOXY TERRAZZO BASE-  
COLOR: INDIGO #4385  
30% BLACK STALLION #0, #1  
30% TM MIDNIGHT #1, #2  
40% ONE-SIDED MIRROR #0, #1
- (E6) 6" EPOXY TERRAZZO BASE-  
COLOR: SEQUOIA DUSK 39C-1P  
35% ASH GRAY GLASS #0  
5% ONE-SIDED MIRROR #0  
60% MICROBASE
- (E7) 6" EPOXY TERRAZZO BASE-  
COLOR: CADMIUM YELLOW  
60% TUSCAN ODER #0, #1, #2  
40% PEPPER HARVEST #0, #1, #2
- SEE SPECIFICATION SECTION 09575  
SEE ENLARGED PATTERN PLAN ON 1-203

**FINISH SCHEDULE**

**Base**

- (B1) 6" RUBBER BASE-  
"LIONSONITE"; TRADITIONAL 6"  
COLOR- 20 CHARCOAL
- (B2) 6" EPOXY TERRAZZO BASE-  
COLOR: STEEL WOOL #6650  
100% BLUE COAL #0, #1  
100% TARA BLUE GLASS #1  
5% CHUNKY ORANGE #1  
5% FW MOP #2  
10% BUTTERCUP GLASS #1  
5% LAVENDER #1
- (B3) EXISTING BASE FINISH-  
NO FINISH WORK REQUIRED UNLESS NOTED
- (B4) 6" EPOXY TERRAZZO BASE-  
COLOR: STEEL WOOL #6650  
80% BLUE COAL #0, #1  
20% ONE-SIDED MIRROR #1
- (B5) 6" EPOXY TERRAZZO BASE-  
COLOR: INDIGO #4385  
30% BLACK STALLION #0, #1  
30% TM MIDNIGHT #1, #2  
40% ONE-SIDED MIRROR #0, #1
- (B6) 6" EPOXY TERRAZZO BASE-  
COLOR: SEQUOIA DUSK 39C-1P  
35% ASH GRAY GLASS #0  
5% ONE-SIDED MIRROR #0  
60% MICROBASE
- (B7) 6" EPOXY TERRAZZO BASE-  
COLOR: CADMIUM YELLOW  
60% TUSCAN ODER #0, #1, #2  
40% PEPPER HARVEST #0, #1, #2
- SEE SPECIFICATION SECTION 09575  
SEE ENLARGED PATTERN PLAN ON 1-203

**Walls**

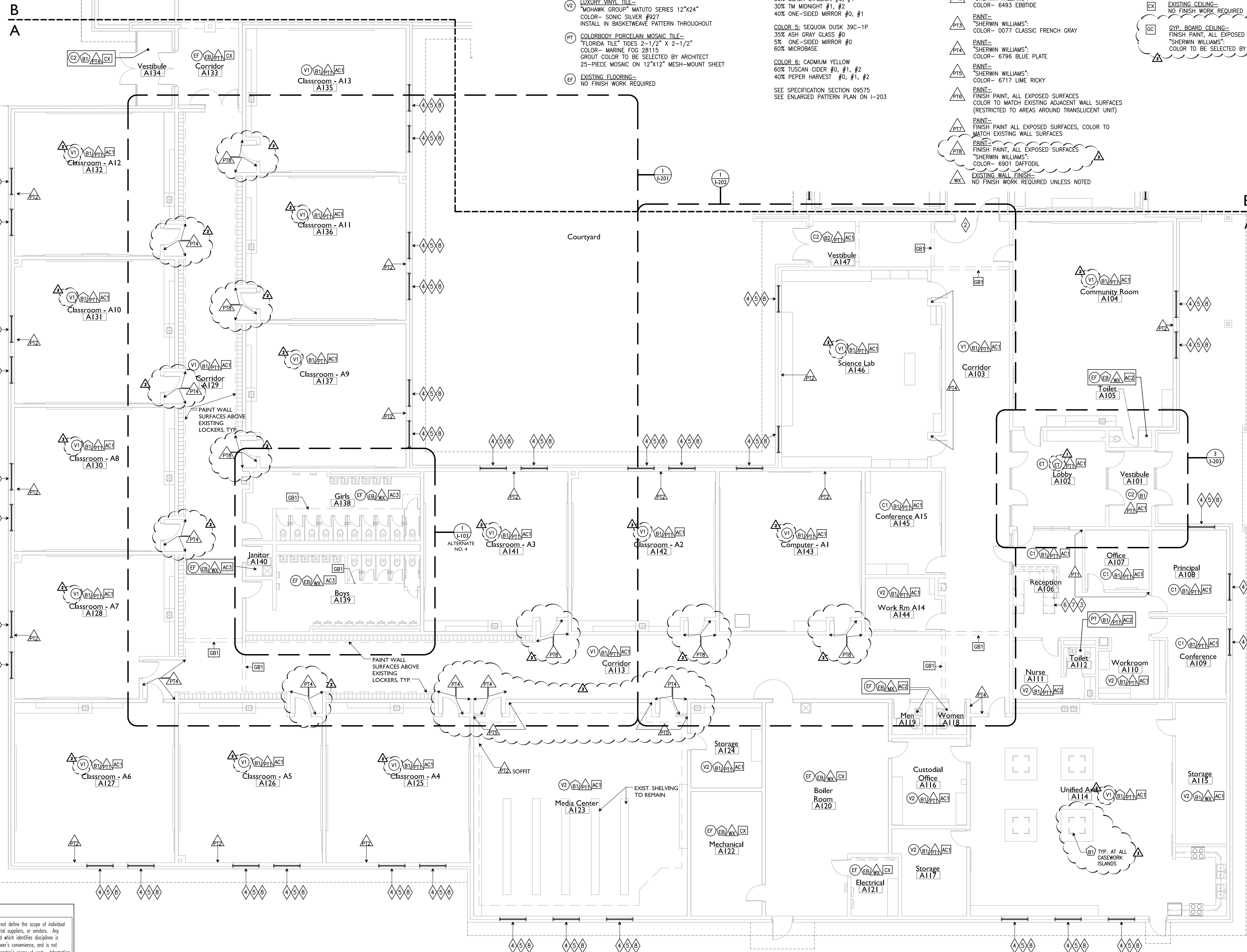
- (W1) PAINT-  
"SHERWIN WILLIAMS";  
COLOR- 7651 FRONT PORCH
- (W2) PAINT-  
"SHERWIN WILLIAMS";  
COLOR- 6493 EBETIDE
- (W3) PAINT-  
"SHERWIN WILLIAMS";  
COLOR- 0077 CLASSIC FRENCH GRAY
- (W4) PAINT-  
"SHERWIN WILLIAMS";  
COLOR- 6796 BLUE PLATE
- (W5) PAINT-  
"SHERWIN WILLIAMS";  
COLOR- 6717 LIME RICKY
- (W6) PAINT-  
FINISH PAINT, ALL EXPOSED SURFACES  
(RESTRICTED TO AREAS AROUND TRANSLUCENT UNIT)
- (W7) PAINT-  
FINISH PAINT ALL EXPOSED SURFACES, COLOR TO  
MATCH EXISTING WALL SURFACES
- (W8) PAINT-  
FINISH PAINT, ALL EXPOSED SURFACES  
"SHERWIN WILLIAMS";  
COLOR- 6901 DAFFODIL
- (W9) EXISTING WALL FINISH-  
NO FINISH WORK REQUIRED UNLESS NOTED

**Ceilings**

- (AC1) ACOUSTICAL CEILING-  
TYPE "A"  
(SEE SPECIFICATION SECTION 09510)
- (AC2) ACOUSTICAL CEILING-  
TYPE "B"  
(SEE SPECIFICATION SECTION 09510)
- (AC3) ACOUSTICAL CEILING-  
TYPE "C"  
(SEE SPECIFICATION SECTION 09510)
- (GB1) GYP. BOARD SOFFIT-  
FINISH PAINT, ALL EXPOSED SURFACES  
"SHERWIN WILLIAMS";  
COLOR TO BE SELECTED BY ARCHITECT
- (GB2) GYP. BOARD SOFFIT-  
FINISH PAINT, ALL EXPOSED SURFACES  
"SHERWIN WILLIAMS";  
COLOR- 6901 DAFFODIL
- (GC) EXISTING CEILING-  
NO FINISH WORK REQUIRED UNLESS NOTED
- (GC) GYP. BOARD CEILING-  
FINISH PAINT, ALL EXPOSED SURFACES  
"SHERWIN WILLIAMS";  
COLOR TO BE SELECTED BY ARCHITECT

**Specialties**

- (ALT. NO. 4) (S) SOLID PLASTIC TOILET PARTITIONS-  
SEE SPECIFICATION SECTION 10171  
COLOR TO BE SELECTED BY ARCHITECT
- (S) METAL DOOR & FRAME-  
FINISH PAINT, ALL EXPOSED SURFACES  
COLOR- GREZLE GREY 7068
- (S) PLASTIC LAMINATE CASEWORK-  
ALL EXPOSED SURFACE;  
"WILSONART"  
COLOR- PHANTOM PEARL 8211K-28  
FINISH- GLOSS LINED FINISH
- (S) ALUMINUM STOREFRONT-  
PRE-FINISHED
- (S) SOLID SURFACE WINDOW SILL & APRON-  
"WILSONART"  
COLOR- ZEN GREY 91156S  
PROVIDE OVERHANG AS SHOWN ON WINDOW DETAILS
- (S) SOLID SURFACE COUNTERTOPS-  
"LIVING STONE"  
COLOR- L308 TUNDRA
- (S) PLASTIC LAMINATE CASEWORK-  
ALL EXPOSED SURFACES;  
"FORMICA"  
COLOR- 8829-58 GRAPHITE TWILL
- (ALT. NO. 5) (S) WINDOW SHADES-  
SHADE FABRIC- 5% OPENNESS  
COLOR TO BE SELECTED BY ARCHITECT  
SEE A-801 FOR WINDOW SIZES AND DETAILS  
SEE SPECIFICATION SECTION 01230 FOR ALTERNATE DESCRIP





**General Finish Notes**

- CONTRACTOR IS RESPONSIBLE TO PROVIDE A SMOOTH AND LEVEL TRANSITION BETWEEN DIFFERING FLOOR FINISHES. CONTRACTOR TO PROVIDE TRANSITION STRIP BETWEEN ALL DISSIMILAR FLOORING MATERIALS. SEE SPECIFICATIONS FOR FLOORING TRANSITION STRIPS.
- ALL NOTATIONS ARE INTENDED TO INDICATE FINISHES FOR ENTIRE AREA OF ITEM AND ALL EXPOSED SURFACES INCLUDING WALL-TO-WALL, FLOOR-TO-CEILING, ENTIRE LENGTH OF SURFACE, ALL SIDES, ALL EDGES, AND ALL ASSOCIATED COMPONENTS, UNLESS OTHERWISE NOTED.
- ALL COLUMNS IN ROOMS AND AREAS ARE TO BE FINISHED TO MATCH WALL SURFACES OF THAT SPACE OR ADJACENT WALLS, UNLESS OTHERWISE NOTED.
- ALL ITEMS IN EXPOSED CEILING AREAS ARE TO BE FINISH PAINTED THE SAME COLOR SO AS TO CREATE A UNIFORM AND CONSISTENT AESTHETIC IN THE CEILING. INCLUDES, BUT NOT LIMITED TO: ALL STRUCTURAL COMPONENTS, DECKING, PIPING, CONDUIT, DUCTWORK, INSULATION, MECHANICAL EQUIPMENT, MISCELLANEOUS ITEMS, HANGERS, SUPPORTS, ETC.
- SEE SPECIFICATIONS SECTION 01230-ALTERNATES FOR FURTHER REQUIREMENTS AND CLARIFICATIONS AS TO SCOPE OF WORK IN EACH ALTERNATE BID PACKAGE.

**Flooring**

- C1** MODULAR CARPET TILE- "PATCRAFT" 24"x24" MODULAR TILES; PATTERN- COLOR POP 0381 COLOR- SATELLITE POP 0320 INSTALLATION METHOD- QUARTER-TURN
- C2** MODULAR WALK-OFF CARPET TILE- "INTERFACE" 50CM X 50CM PATTERN- SUPER FLO 412 6090002504 COLOR- GREY 609159 INSTALLATION METHOD- ↓ TURN
- V1** LUXURY VINYL TILE- "MOHAWK GROUP" MATUTO SERIES 12"x24" COLOR 1- SONIC SILVER #927 (FIELD COLOR) COLOR 2- GREEN GRASS #646 COLOR 3- BLUE NIGHT #555 COLOR 4- VIVID VIOLET #453 COLOR 5- RED HOT #353 COLOR 6- OUTRAGEOUS ORANGE #252 COLOR 7- UNMELLOW YELLOW #121 COLOR 8- GREY GRANITE #959 SEE 1-200 SHEETS FOR PATTERN
- V2** LUXURY VINYL TILE- "MOHAWK GROUP" MATUTO SERIES 12"x24" COLOR- SONIC SILVER #927 INSTALL IN BASKETWEAVE PATTERN THROUGHOUT
- PT** COLORBODY PORCELAIN MOSAIC TILE- "FLORIDA TILE" TILES 2-1/2" X 2-1/2" COLOR- MARINE FOG 28115 GROUT COLOR TO BE SELECTED BY ARCHITECT 25-PIECE MOSAIC ON 12"x12" MESH-MOUNT SHEET
- EF** EXISTING FLOORING- NO FINISH WORK REQUIRED

**Flooring Cont'd**

- ET** EPOXY TERRAZZO- "TERROXY"; COLOR 1- WHITE #2001 25% ITALIAN WHITE #1 25% ITALIAN WHITE #0 5% RELISH GLASS #1 10% ONE-SIDED MIRROR #1 10% TARA BLUE GLASS #1 5% CHUNKY ORANGE #1 5% FW MOP #2 10% BUTTERCUP GLASS #1 5% LAVENDER #1
- COLOR 2- WHITE #2001 65% CHINA WHITE #0, #1 35% LIGHT GRAY #0, #1
- COLOR 3- STEEL WOOL #6650 80% BLUE COAL #0, #1 20% ONE-SIDED MIRROR #1
- COLOR 4- INDIGO #4385 30% BLACK STALLION #0, #1 30% TM MIDNIGHT #1, #2 40% ONE-SIDED MIRROR #0, #1
- COLOR 5- SEQUOIA DUSK 39C-1P 35% ASH GRAY GLASS #0 5% ONE-SIDED MIRROR #0 60% MICROBASE
- COLOR 6- CADMIUM YELLOW 60% TUSCAN CIDER #0, #1, #2 40% PEPPER HARVEST #0, #1, #2
- SEE SPECIFICATION SECTION 09575 SEE ENLARGED PATTERN PLAN ON I-203

**Base**

- B1** 6" RUBBER BASE- "JOHNSONITE", TRADITIONAL 6" COLOR- 20 CHARCOAL
- ET** 6" EPOXY TERRAZZO BASE- COLOR: STEEL WOOL #6650 100% BLUE COAL #0, #1 SEE SPECIFICATION SECTION 09575
- TB** COLORBODY PORCELAIN BULLNOSE BASE- "FLORIDA TILE", TILES 3"x24" COLOR- MARINE FOG 28115
- EB** EXISTING BASE FINISH- NO FINISH WORK REQUIRED UNLESS NOTED

**Walls**

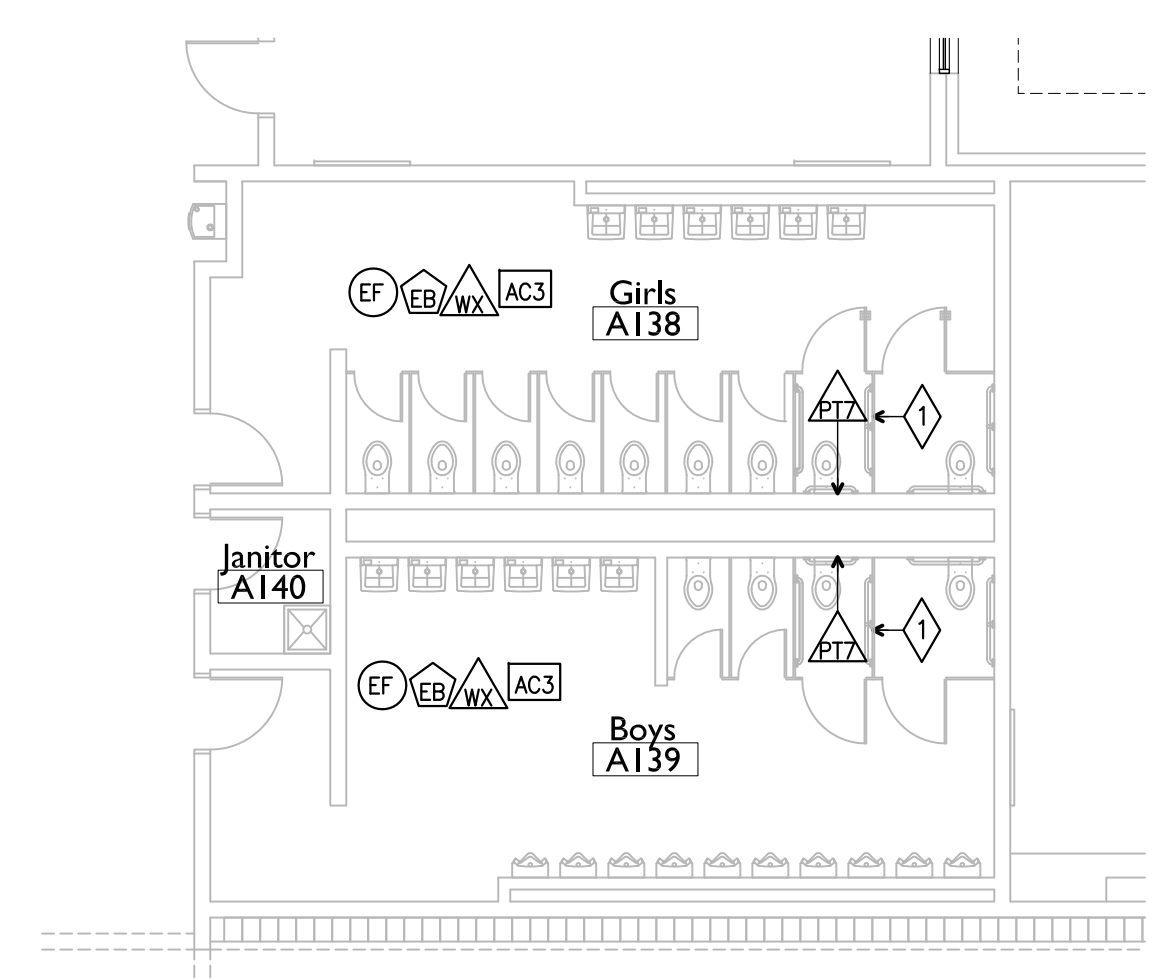
- PT1** PAINT- "SHERWIN WILLIAMS"; COLOR- 7651 FRONT PORCH
- PT2** PAINT- "SHERWIN WILLIAMS"; COLOR- 6493 EBBTIDE
- PT3** PAINT- "SHERWIN WILLIAMS"; COLOR- 0077 CLASSIC FRENCH GRAY
- PT4** PAINT- "SHERWIN WILLIAMS"; COLOR- 6796 BLUE PLATE
- PT5** PAINT- "SHERWIN WILLIAMS"; COLOR- 6717 LIME RICKY
- PT6** PAINT- FINISH PAINT, ALL EXPOSED SURFACES COLOR TO MATCH EXISTING ADJACENT WALL SURFACES (RESTRICTED TO AREAS AROUND TRANSLUCENT UNIT)
- PT7** PAINT- FINISH PAINT ALL EXPOSED SURFACES, COLOR TO MATCH EXISTING WALL SURFACES
- PT8** PAINT- FINISH PAINT, ALL EXPOSED SURFACES "SHERWIN WILLIAMS"; COLOR- 6901 DAFFODIL

**Ceilings**

- AC1** ACOUSTICAL CEILING- TYPE "A" (SEE SPECIFICATION SECTION 09510)
- AC2** ACOUSTICAL CEILING- TYPE "B" (SEE SPECIFICATION SECTION 09510)
- AC3** ACOUSTICAL CEILING- TYPE "C" (SEE SPECIFICATION SECTION 09510)
- BB1** GYP. BOARD SOFFIT- FINISH PAINT, ALL EXPOSED SURFACES "SHERWIN WILLIAMS"; COLOR TO BE SELECTED BY ARCHITECT
- GB2** GYP. BOARD SOFFIT- FINISH PAINT, ALL EXPOSED SURFACES "SHERWIN WILLIAMS"; COLOR- 6901 DAFFODIL
- CX** EXISTING CEILING- NO FINISH WORK REQUIRED UNLESS NOTED
- GC** GYP. BOARD CEILING- FINISH PAINT, ALL EXPOSED SURFACES "SHERWIN WILLIAMS"; COLOR TO BE SELECTED BY ARCHITECT

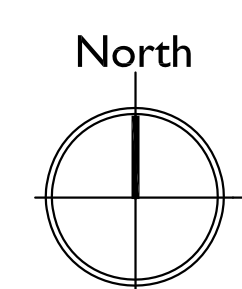
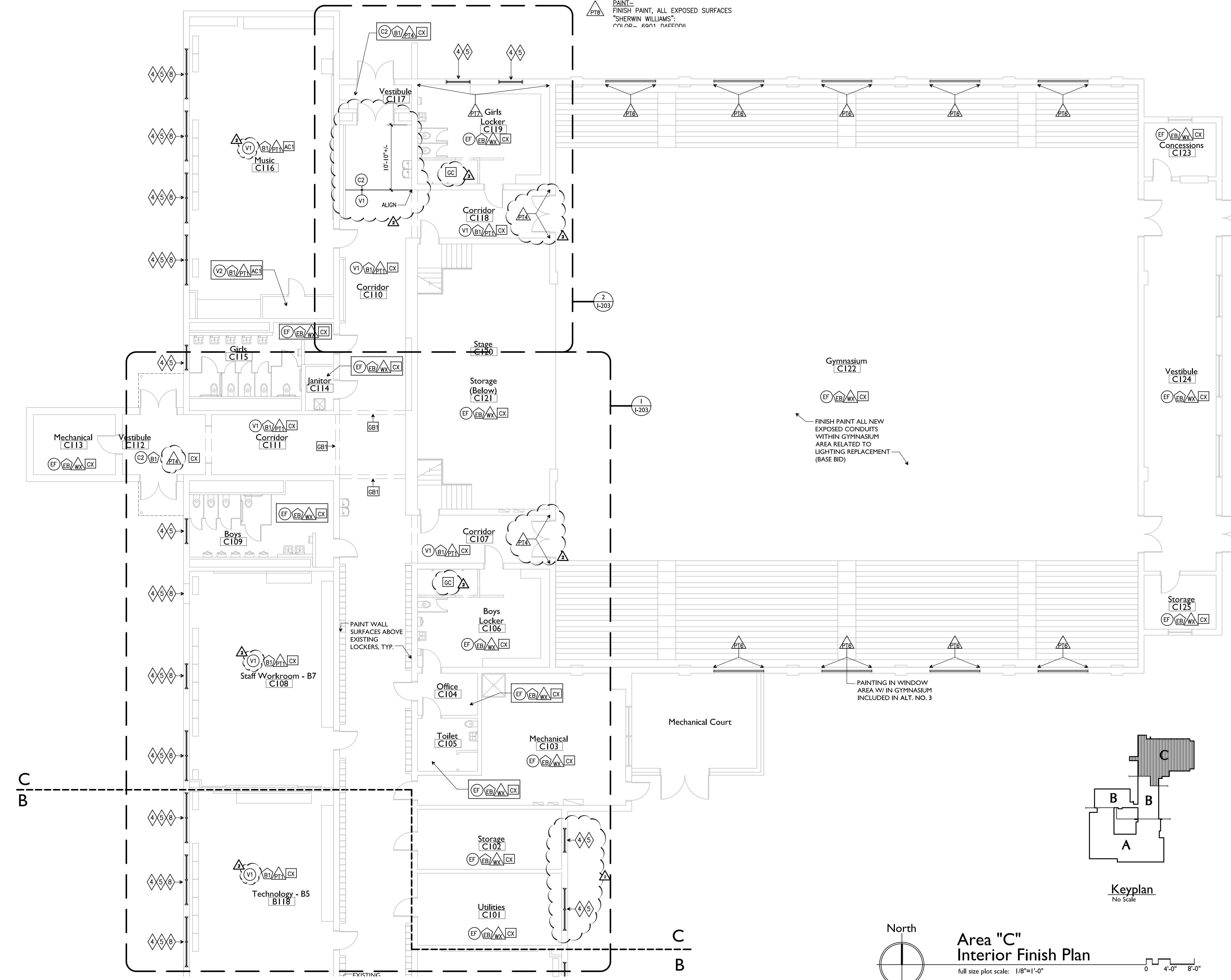
**Specialties**

- ALT. NO. 4** SOLID PLASTIC TOILET PARTITIONS- SEE SPECIFICATION SECTION 10171 COLOR TO BE SELECTED BY ARCHITECT
- METAL DOOR & FRAME- FINISH PAINT ALL EXPOSED SURFACES COLOR- GREZZLE GREY 7068
- PLASTIC LAMINATE CASEWORK- ALL EXPOSED SURFACES; "WILSONART" COLOR-PHANTOM PEARL B211K-28 FINISH- GLOSS LINED FINISH
- ALUMINUM STOREFRONT- PRE-FINISHED
- SOLID SURFACE WINDOW SILL & APRON- "WILSONART" COLOR- ZEN GREY 9115G5 PROVIDE OVERHANG AS SHOWN ON WINDOW DETAILS
- SOLID SURFACE COUNTERTOPS- "LIVING STONE" COLOR- L308 TUNDRA
- PLASTIC LAMINATE CASEWORK- ALL EXPOSED SURFACES; "FORMICA"; COLOR- 8829-58 GRAPHITE TWILL
- ALT. NO. 5** WINDOW SHADES- SHADE FABRIC- 5% OPENNESS COLOR TO BE SELECTED BY ARCHITECT SEE A-B01 FOR WINDOW SIZES AND DETAILS SEE SPECIFICATION SECTION 01230 FOR ALTERNATE DESCRIPTION



**Alternate No. 4 - Finish Plan**

I-103 full size plot scale: 1/8"=1'-0"



**Area "C" Interior Finish Plan**

full size plot scale: 1/8"=1'-0"

**Notice**  
The Architect/Engineer does not define the scope of individual trades, subcontractors, material suppliers, or vendors. Any sheet numbering system used which identifies disciplines is solely for the Architect/Engineer's convenience, and is not intended to define a subcontractor's scope of work. Information regarding individual trades, subcontractors, material suppliers, and vendors may be detailed, described and indicated at different locations throughout these documents. No consideration will be given to requests for change orders for future to obtain and review the complete set of drawings and specifications when preparing bids, prices, and quotations.

630 Walnut Street  
 Jeffersonville, IN 47130  
 812.382.1717 FAX  
 www.kovert-hawkins.com

Kovert-Hawkins  
architects

---

Drawn: AH/BAB  
 Checked by: HK  
 Project No.: 1649.01  
 Date: 07/17/2017

---

Revisions: 1. 8-11-2017 ADDENDUM NO.1  
 2. 8-14-2017 ADDENDUM NO.2  
 3.  
 4.  
 5.  
 6.

---

2017 Renovations

Dillsboro Elementary School

13200 North Street  
Dillsboro, Indiana 47018

South Dearborn Community School Corporation

---

I-103